

# SM132-USB

13.56 MHz RFID Mifare® Read / Write  
USB Module



---

## *DATA SHEET*

- Complete Read/Write module including antenna
- Supports ISO14443A  
Mifare® Classic 1K , Mifare® Classic 4K , Mifare® Ultralight
- USB Interface
- USB Powered - No External Power required
- Fast data transfer - Contactless communication up to 106 KHz
- Secure - Encrypted contactless communication
- Upgradeable
- Ideal for e-money , secure access and fast data collection applications



---

<b>1. INTRODUCTION</b>	<b>4</b>
1.1 EVALUATION KIT – SM1320 USB	4
<b>2. MIFARE® BRIEF TECHNICAL INFORMATION</b>	<b>6</b>
<b>3. COMMUNICATION PROTOCOLS</b>	<b>7</b>
3.1 UART	8
<b>4. COMMANDS &amp; RESPONSES</b>	<b>9</b>
4.1 RESET	9
4.2 READ FIRMWARE VERSION	9
4.3 SELECT TAG	10
4.4 SEEK FOR TAG	11
4.5 AUTHENTICATE	12
4.6 READ BLOCK	13
4.7 READ VALUE BLOCK	14
4.8 WRITE BLOCK	15
4.9 WRITE VALUE BLOCK	16
4.10 WRITE 4 BYTE BLOCK	17
4.11 WRITE MASTER KEY	18
4.12 INCREMENT VALUE BLOCK	19
4.13 DECREMENT VALUE BLOCK	20
4.14 SET ANTENNA POWER	21
4.15 READ INPUT PORT	22
4.16 WRITE TO OUTPUT PORT	23
4.17 HALT TAG	24
4.18 SET BAUD RATE	25
4.19 SLEEP	26
<b>5. ELECTRICAL &amp; PERFORMANCE SPECIFICATIONS</b>	<b>27</b>
5.1 DC CHARACTERISTICS	27

---

<b>5.2 OPERATING TEMPERATURE</b>	<b>27</b>
<b>5.3 ABSOLUTE MAXIMUM RATINGS</b>	<b>27</b>
<b>5.4 PERFORMANCE SPECIFICATIONS</b>	<b>27</b>
<b>6. SALES AND SERVICE INFORMATION</b>	<b>28</b>

---

## 1. INTRODUCTION

SM132-USB is a compact 13.56MHz RFID Read / Write USB module integrated with PCB antenna and designed for ISO14443A standard and supports Mifare® Classic 1K, Mifare® Classic 4K and Mifare® Ultralight transponders.

SM132-USB comes with the same firmware of SM130 Serial/I2C Mifare modules. USB to Serial protocol conversion is done by the module's hardware thus user can access the module thru USB bus with the serial protocol.

The serial protocol is explained in this document. SonMicro also released Software **Development Kit**, SDK, including **ActiveX Control** for users who do not want to deal with the protocol used. With the provided ActiveX Library, user can create PC based Mifare applications very quickly and there is no hardware or electronics knowledge is required. ActiveX Library comes free and with unlimited user license with -Deluxe- versions of the Development/Evaluation Kits. For details about SDK, please refer to SDK User Manual document found at <http://www.sonmicro.com>

Mifare® Classic is a secure memory (1Kbyte, 4KByte) chip/card often called contactless smart card. The reason it is called smartcard is because it has increment and decrement functions designed for especially payment systems. Mifare® Classic family of tags is being used in RFID applications where very high security and fast data collection systems are required. This family of tags has contactless communication speed up to 106 KHz and uses very strong encryption techniques. It is impossible to copy or modify the content of the Mifare® Classic family of tags without the correct key(s) when it is protected. As a result Mifare® become ideal for e-money applications, secure access, data storage and fast data collection systems. Not only limited with these applications but printed antenna technology makes possible to find very thin and low cost Mifare® tags (e.g. labels, stickers) so that extending the field of RFID applications.

Mifare® Ultralight differs from Mifare® Classic family. It has 512 bits memory and the contactless communication is not encrypted. However it has anti-cloning support by unique 7 byte serial number of each device.

### 1.1 EVALUATION KIT – SM1320 USB

SM1320 is a professional evaluation kit for SM132-USB modules. SM1320 evaluation kit can be used to develop your application quickly or it can simply demonstrate main features of the SM132-USB module. SM1320 can be also used as stand alone Mifare® Programmer / Reader.

Designers can develop or evaluate their own specific application with the kit. It is ideal for any Mifare application such as Customer Loyalty, e-purse applications that needs to be connected to the PC with USB.

SM1320 Evaluation Kit comes with original SMRFID Mifare® Software, USB Driver and SDK tools

SMRFID Mifare® Software makes easy to start with SM1320 evaluation kit. Software provides Mifare® Programmer / Writer, Mifare Reader® features as well as setting configuration parameters of SM132USB modules.

SDK includes ActiveX Component, example Visual Basic project and SDK user Manual document.

For a very quick and painless start we recommend you to buy a low cost SM1013 Evaluation kit.

For latest Documentation & Software:

<http://www.sonmicro.com/1356/d1356.php>

For Online Store:

<http://www.sonmicro.com/shop/shop3.php>

## 2. MIFARE® BRIEF TECHNICAL INFORMATION

For Mifare® tag memory organization and communication principles please refer to SM130 User Manual document. For deeper details refer to m001051.pdf document (Standard Card IC MF1 IC S50) of Philips Semiconductor. Mentioned document gives functional specification of the IC used in Mifare® 1K tags. Same communication principles are valid for Mifare® 4K (MF1 IC S70) tags. Documents can be downloaded at <http://www.sonmicro.com/1356/d1356.php>

Communication principles are greatly simplified by SM130 module as follows:

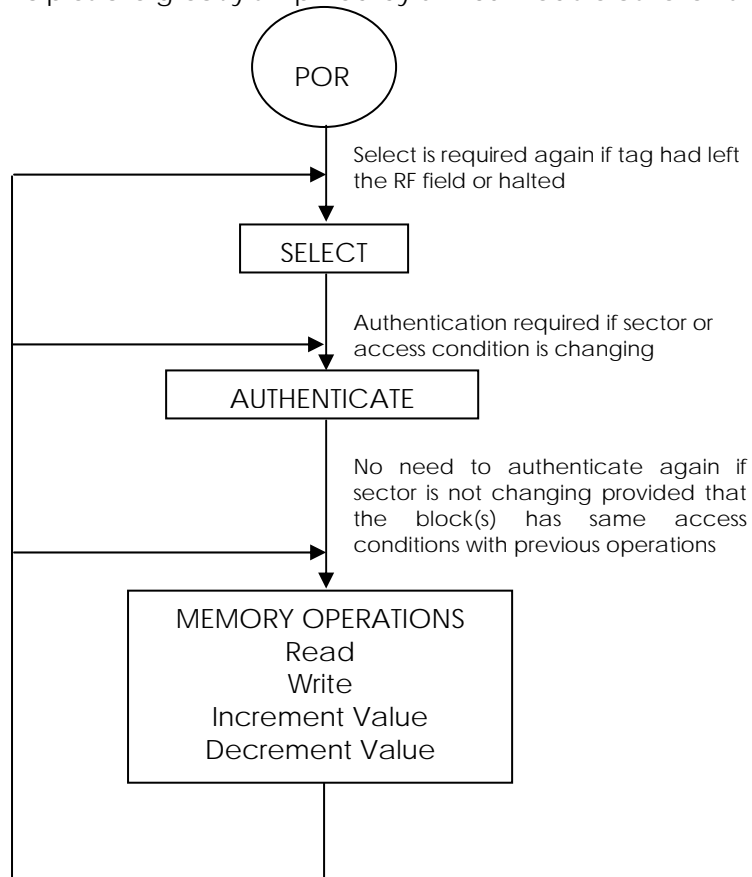


Figure 1 – Flow diagram to perform operations on Mifare® tag

The following sequence of operations has to be performed to access any block in the tag.

- 1 – The tag should be selected with the serial number.
- 2 – The relevant Sector should be authenticated with the relevant key. For example, if a block has to be read and if the access condition of the block is KeyB, then the sector should be authenticated using KeyB
- 3 – After the authentication, the required operation may be performed on the block of the authenticated sector. The operation will be allowed only if the access conditions for the block allow this. For example, if a block has Read condition using KeyB and write condition using KeyA/B then authenticating using KeyA will only allow a write operation. If a read is attempted the tag will halt and will not grant any further access. For accessing the tag further, it has to be again selected and authenticated. Also, only the sector that has been authenticated may be accessed. For example, if Sector 1 has been authenticated to access Block6 and if Block 9 is accessed, the tag will halt.

### 3. COMMUNICATION PROTOCOLS

SM132-USB is connected to the PC thru USB but the protocol implemented by UART/Serial. The USB to Serial conversion will be done by the module hardware

The following table lists the commands supported by SM132-USB module and the corresponding code. Note that for users who are using ActiveX library can skip this section and investigate SDK User Manual document for the software commands.

Code	Command	Description
0x80	Reset	Resets the Module
0x81	Firmware	Reads the Firmware Revision of the Module
0x82	Seek for Tag	Continuously checks for presence of a tag
0x83	Select Tag	Selects a Tag
0x84	NA	Not Implemented
0x85	Authenticate	Authenticates the selected Block
0x86	Read Block	Reads from the specified Block
0x87	Read Value	Reads from a Value Block
0x88	NA	Not Implemented
0x89	Write Block	Writes the data to the specified block
0x8A	Write Value	Formats and Writes a Value block
0x8B	Write 4 Byte Block	Writes 4 byte data to Mifare Ultralight block
0x8C	Write Key	Writes the Key to the EEPROM of the MFRC530
0x8D	Increment	Increments a value block
0x8E	Decrement	Decrements a value block
0x8F	NA	Not Implemented
0x90	Antenna Power	Switches ON or OFF the RF field
0x91	Read port	Reads from the Input port
0x92	Write Port	Writes to the Output port
0x93	Halt	Halts the PICC
0x94	Set Baud Rate	Sets the new baud rate
0x95	NA	Not Implemented
0x96	Sleep	This command puts SM130 in sleep mode

**Table 1**– Serial Commands to control SM132-USB module.

### 3.1 UART

The communication between the host and the module can take place at 9600bps, 19200bps, 38400bps, 57600bps or 115200bps N, 8, 1. Module communicates at 19200bps,N,8,1 as default. Once the baud rate is changed using the Change baud rate command, successful communication will only occur with the new baud rate.

The host first sends the command and the module executes the operation and replies with a response to the command. The host can analyze the reply to check if the operation was successful or if any error occurred during the operation.

Following is the UART frame for the commands sent by the host:

Header	Reserved	Length	Command	Data	CSUM
1 Byte	1 Byte	1 Byte	1 Byte	N Bytes	1 Byte

**Table 2** – UART frame send by Host

- Header:** This is a single byte that indicates the beginning of a frame. This byte should be always 0xFF
- Reserved:** This byte is reserved for future use and not implemented currently. It has to be always 0x00
- Length:** This byte is used to indicate the length of the payload data. This includes the Command and the Data bytes
- Command:** This byte is used to instruct the module on what operation to perform
- Data:** These are parameters necessary for the module to execute the command. For example, for a Read command, the data will be the block number to be read. For a Write command, this will be the block number and 16 bytes of data.
- CSUM:** This is the checksum byte. This byte is used on the host as well as the module to check the validity of the packet and to trap any data corruption. This is calculated by adding all the bytes in the packet except the Header byte

Following is the UART frame for the response packets sent by SM130 module in response to the commands:

Header	Reserved	Length	Command	Response	CSUM
1 Byte	1 Byte	1 Byte	1 Byte	N Bytes	1 Byte

**Table 3** – UART frame send by SM130 module

- Header:** This is a single byte that indicates the beginning of a frame. This byte will be always 0xFF
- Reserved:** This byte is reserved for future use and not implemented currently. It is 0x00
- Length:** This byte is used to indicate the length of the payload data.
- Command:** This is the command for which the response is being sent back. The host can use this byte to verify that the received response is for the command it sent.
- Response:** This contains the result data if an operation was successful or the error code if the operation was not successful. The status of the operation can be found by the length of the data bytes. For example, if the data length is 16 when a read command is executed it means that the operation was successful. If the data length is 1, then it means that the read was not successful and the nature of the error can be found out by analyzing the Error code sent, which is the single data byte
- CSUM:** This is the checksum byte. This is the sum of all bytes except the Header byte



## 4. COMMANDS & RESPONSES

In this chapter detailed information and UART frame examples are given for command and responses.

### 4.1 RESET

This command generates software reset on the module.

**Command:**

<b>Command</b>	0x80
<b>Data</b>	None

**Table 4** – Reset Command

**Response:**

The module responds with a version string to the reset command. The response is the same as the one found in the Read Firmware Version Command

**Example Command:**

FF 00 01 80 81

*Reset SM132-USB module*

**Example Response:**

FF 00 04 81 30 2E 31 14 – Version is 0.1

### 4.2 READ FIRMWARE VERSION

This command reads the firmware version of the module

**Command:**

<b>Command</b>	0x81
<b>Data</b>	None

**Table 5** – Read Firmware Version Command

**Response:**

The module responds with a version string to this command.

**Example Command:**

FF 00 01 81 82

**Example Response:**

FF 00 04 81 30 2E 31 14 – Version is 0.1

### 4.3 SELECT TAG

This command Selects a Tag if it is present in the field. On receiving the command, the module executes an Anti-collision and Select command sequences. If a tag was present, then it selects the tag and sends the serial number of the tag as response. If a tag was not present, it sends an error code back.

#### Command:

<b>Command</b>	0x83
<b>Data</b>	None

**Table 6** – Select Command

#### Response:

If a tag was selected, the response data length is 6 or 9 bytes. The first byte is the command byte (0x83) and the next is the Tag Type and the next 4 bytes / 7 bytes are the tag serial number MSB first. The serial number is 4 bytes for Mifare 1K and 4K tags and 7 bytes for Mifare Ultralight tags.

<b>Data Length</b>	0x06 or 0x09
<b>Command/Response</b>	0x83
<b>Tag Type</b>	1 Byte 0x01 – Mifare Ultralight 0x02 – Mifare Standard 1K 0x03 – Mifare Classic 4K 0xFF – Unknown Tag type
<b>Serial Number</b>	4 Byte / 7 Byte Serial Number, 1 <sup>st</sup> byte is the MSB

**Table 7** – Response to Select Command

If no tag was present, the data length is set to 1 and the Error code returned is 'N'  
If RF Field is OFF, the data length is set to 1 and the Error code returned is 'U'

<b>Data Length</b>	0x02
<b>Command/Response</b>	0x83
<b>Error Code</b>	0x4E 'N' - No Tag present. 0x55 'U' – Access failed due to RF Field is OFF

**Table 8** – Response to Select Command

#### Example Command:

FF 00 01 83 84

*Select Tag*

#### Example Response:

FF 00 06 83 01 39 0D 4C D2 EE

*Mifare® 1K tag selected, Serial Number 390D4CD2*

FF 00 02 83 4E D3

*No Tag present*

## 4.4 SEEK FOR TAG

This command seeks and selects a Tag as soon as the tag presents in the field. On receiving the command, the module executes an Anti-collision and Select command sequences. As soon as the tag enters into the RF field, then module selects the tag and sends the serial number of the tag as response.

### Command:

<b>Command</b>	0x82
<b>Data</b>	None

**Table 9** – Seek For Tag Command

### Response:

When this command is executed and immediate response arrives as in Table 16 to show that Seek For Tag command is in progress or failed.

<b>Data Length</b>	0x02
<b>Command/Response</b>	0x82
<b>Error Code</b>	0x4C 'L' – Command in progress. 0x55 'U' – Command in progress but RF Field is OFF

**Table 10** – Response to Seek For Tag Command

As soon as a tag enters into the RF field it is selected and the response data length is 6 or 9 bytes according to tag type. The first byte is the command byte (0x82) the second is the Tag Type and the next 4 bytes / 7 bytes are the tag serial number MSB first. The serial number is 4 bytes for Mifare 1K and 4K tags and 7 bytes for Mifare Ultralight tags.

<b>Data Length</b>	0x06 or 0x09
<b>Command/Response</b>	0x82
<b>Tag Type</b>	1 Byte 0x01 – Mifare Ultralight 0x02 – Mifare Standard 1K 0x03 – Mifare Classic 4K 0xFF – Unknown Tag type
<b>Serial Number</b>	4 Byte / 7 Byte Serial Number, 1 <sup>st</sup> byte is the MSB

**Table 11** – Response to Seek For Tag Command

### Example Command:

FF 00 01 82 83

*Seek for Tag*

### Example Response:

Response 1: FF 00 02 82 4C D0

*Command is being executed.*

(Module waits here for a tag to enter into the RF Field)

Response 2: FF 00 06 82 02 D4 5A 8D 55 9A

*Mifare® 1K tag selected, Serial Number 558D5AD4*

## 4.5 AUTHENTICATE

This command authenticates the specified block with the specified Key type and Key sequence.

### Command:

<b>Command</b>	0x85
<b>Block Number</b>	1 Byte – Block number to be authenticated
<b>Key Type</b>	1 Byte – Option byte that instructs the module which type of key to be used for authentication  <b>0xAA</b> : Authenticate with Key type A <b>0xBB</b> : Authenticate with Key type B <b>0xFF</b> : Authenticate with Key type A and transport key FF FF FF FF FF FF  <b>0x10 to 0x1F</b> : Authenticate with Key type A using the key stored in the SM130 module's E2PROM (0 to 15) <b>0x20 to 0x2F</b> : Authenticate with Key type B using the key stored in the SM130 module's E2PROM (0 to 15)
<b>Key</b>	6 Bytes – Key to be used for authentication.

Table 12 – Authenticate Command

### Response:

<b>Data Length</b>	0x06
<b>Command/Response</b>	0x85
<b>Status / Error Code</b>	1 Byte – Status / Error code  0x4C 'L' – Login Successful 0x4E 'N' – No Tag present or Login Failed 0x55 'U' – Login Failed 0x45 'E' – Invalid key format in E2PROM

Table 13 – Response to Authenticate Command

### Example Command:

FF 00 03 85 01 FF 88

*Authenticate Block 0x01 with transport key FF FF FF FF FF FF*

FF 00 09 85 05 AA 11 23 43 FC 97 CD 14

*Authenticate Block 0x05 with key type A, and Key 11 23 43 FC 97 CD*

FF 00 03 85 02 11 9B

*Authenticate Block 0x02 with Key type A from the SM132-USB's internal EEPROM sector number 0x01*

FF 00 03 85 02 23 AD

*Authenticate Block 0x02 with key type B from the SM132-USB's internal EEPROM sector number 0x03*

### Example Response:

FF 00 02 85 4C D3

*Login Successful*

FF 00 02 85 4E D5

*No Tag present or Login Failed*

## 4.6 READ BLOCK

This command reads 16 bytes from the specified block. Before executing this command, the particular block should be authenticated. If not authenticated, this command will fail.

### Command:

<b>Command</b>	0x86
<b>Block Number</b>	1 Byte – Block Number to be read

Table 14 – Read Block Command

### Response:

Success:

<b>Data Length</b>	0x12
<b>Command/Response</b>	0x86
<b>Block Number</b>	1 Byte – Block number that has been read
<b>Data</b>	16 Bytes – 16 bytes of data that have been read from the specified block

Table 15 – Response to Read Block Command

Fail:

<b>Data Length</b>	0x02
<b>Command/Response</b>	0x86
<b>Error Code</b>	1 Byte – Error Code 0x4E ‘N’ – No Tag present 0x46 ‘F’ – Read Failed

Table 16 – Response to Read Block Command

### Example Command:

FF 00 02 86 06 8E

*Read 16 bytes from Block 0x06*

### Example Responses:

FF 00 12 86 06 00 01 02 03 04 05 06 07 08 09 0A 0B 0C 0D 0E 0F 16

*Read successful*

FF 00 02 86 46 CE

*Read Failed*

**Note:** When reading a Mifare UL tag, the first 4 bytes are from the block number specified. The next 12 bytes are from the consecutive blocks.

## 4.7 READ VALUE BLOCK

This command reads a value block. Value is a 4byte signed integer. Before executing this command, the block should be authenticated. If the block is not authenticated, this command will fail. Also, this command will fail if the block is not in valid Value format.

### Command:

<b>Command</b>	0x87
<b>Block Number</b>	1 Byte – Block Number to be read

Table 17 – Read Value Block Command

### Response:

Success:

<b>Data Length</b>	0x06
<b>Command/Response</b>	0x87
<b>Block Number</b>	1 Byte – Value Block number that has been read
<b>Data</b>	4 Bytes – Value read from the value block. LSB first

Table 18 – Response to Read Value Block Command

Fail:

<b>Data Length</b>	0x02
<b>Command/Response</b>	0x87
<b>Error Code</b>	1 Byte – Error Code 0x4E ‘N’ – No Tag present 0x49 ‘I’ – Invalid Value Block 0x46 ‘F’ – Read Failed

Table 19 – Response to Read Value Block Command

### Example Command:

FF 00 02 87 08 91

*Read Value from Block 0x08*

### Example Responses:

FF 00 06 87 08 10 27 00 00 CC

*Read Value is successful. The value read is 10000. (0x00002710)*

FF 00 02 87 46 CF

*Read Failed*

FF 00 02 87 49 D2

*Invalid Value Block*

## 4.8 WRITE BLOCK

This command writes 16 bytes to the specified block. Before executing this command, the particular block should be authenticated. If not authenticated, this command will fail.

### Command:

<b>Command</b>	0x89
<b>Block Number</b>	1 Byte – Block Number to be written
<b>Data</b>	16 Bytes – 16 bytes of data to be written to the block.

Table 20 – Write Block Command

### Response:

#### Success:

<b>Data Length</b>	0x12
<b>Command/Response</b>	0x89
<b>Block Number</b>	1 Byte – Value Block number that has been written
<b>Data</b>	16 Bytes – 16 bytes of data that have been read back after the write

Table 21 – Response to Write Block Command

#### Fail:

<b>Data Length</b>	0x01
<b>Command/Response</b>	0x89
<b>Error Code</b>	1 Byte – Error Code 0x55 'U' – Read after write failed (*) 0x58 'X' – Unable to Read after write (*) 0x4E 'N' – No Tag present 0x46 'F' – Write Failed

Table 22 – Response to Write Block Command

(\*)After a block is written, it is read back and verified if the write was successful. If the data read back does not match the data written, the error will be "U". For example, while writing to sector trailer to update Key-A, the value read back will not match the value written.(Key A reads always 00 00 00 00 00 00) If the block that was written is read protected, then read will fail and the error code will be "X". If the write is successful and the data is successfully verified, then the same data that was written is sent back in the response packet.

### Example Command:

FF 00 12 89 0A 00 01 02 03 04 05 06 07 08 09 0A 0B 0C 0D 0E 0F 1D

*Write 16 bytes data ( 00 01 02 03 04 05 06 07 08 09 0A 0B 0C 0D 0E 0F) to block 10*

### Example Responses:

FF 00 12 89 0A 00 01 02 03 04 05 06 07 08 09 0A 0B 0C 0D 0E 0F 1D

*Write successful*

FF 00 02 89 58 E3

Unable to read after write.

FF 00 02 89 55 E0

Read after write failed

## 4.9 WRITE VALUE BLOCK

This command formats and then writes a value block. Value is a 4 byte signed integer. Only the 4-byte value and block number need to be sent to the module. The module formats the value block and then writes. After writing, the Value block is read back to verify if the write was successful. Before executing this command, the block should be authenticated. If the block is not authenticated, this command will fail.

### Command:

<b>Command</b>	0x8A
<b>Block Number</b>	1 Byte – Block Number to be written
<b>Data</b>	4 Bytes – 4 byte long int value. LSB first

Table 23 – Write Value Block Command

### Response:

Success:

<b>Data Length</b>	0x06
<b>Command/Response</b>	0x8A
<b>Block Number</b>	1 Byte – Block number to which value has been written
<b>Data</b>	4 Bytes – Value that has been read back after the write.(LSB first)

Table 24 – Response to Write Value Block Command

Fail:

<b>Data Length</b>	0x02
<b>Command/Response</b>	0x8A
<b>Error Code</b>	1 Byte – Error Code 0x4E ‘N’ – No Tag present 0x49 ‘I’ – Invalid Value Block. The block was not in the proper value format when read back. This could be because there was an error in writing 0x46 ‘F’ – Read Failed during verification

Table 25 – Response to Write Value Block Command

### Example Command:

FF 00 06 8A 08 10 27 00 00 CF

*Write value 10000(0x00002710) to block 8*

### Example Responses:

FF 00 06 8A 08 10 27 00 00 CF

*Write Value successful*

FF 00 02 8A 4E DA

*No Tag present*



## 4.10 WRITE 4 BYTE BLOCK

This command writes 4 bytes to the specified Mifare block. This command has been provided to write to Mifare Ultralight tags.

### Command:

<b>Command</b>	0x8B
<b>Block Number</b>	1 Byte – Block Number to be written
<b>Data</b>	4 Bytes – 4 bytes of data to be written to the block.

**Table 26** – Write 4 Byte Block Command

### Response:

#### Success:

<b>Data Length</b>	0x06
<b>Command/Response</b>	0x8B
<b>Block Number</b>	1 Byte – Value Block number that has been written
<b>Data</b>	4 Bytes – 4 bytes of data that have been read back after the write

**Table 27** – Response to Write 4 Byte Block Command

#### Fail:

<b>Data Length</b>	0x01
<b>Command/Response</b>	0x8B
<b>Error Code</b>	1 Byte – Error Code 0x55 'U' – Read after write failed (*) 0x58 'X' – Unable to Read after write (*) 0x4E 'N' – No Tag present 0x46 'F' – Write Failed

**Table 28** – Response to Write 4 Byte Block Command

After a block is written, it is read back and verified if the write was successful. If the data read back does not match the data written, the error will be "U". If the write is successful and the data is successfully verified, then the same data that was written is sent back in the response packet.

### Example Command:

FF 00 06 8B 04 AA BB CC DD A3

*Write 4 bytes data (AA BB CC DD) to page 4*

### Example Responses:

FF 00 06 8B 04 AA BB CC DD A3

*Write successful*

FF 00 02 8B 46 D3

Write failed

## 4.11 WRITE MASTER KEY

This command writes the Key to the internal EEPROM of the module. There are 16 key sectors in the module. Each sector can hold a TypeA and a TypeB key. The sectors are numbered from 0 to 15. The keys cannot be read back after a write. To check if the key write was successful, execute an authenticate command using the key from EEPROM.

### Command:

<b>Command</b>	0x8C
<b>Internal EEPROM Sector Number</b>	1 Byte – Key sector number where the keys has to be stored. This can be 0x00 to 0x0F ( Total of 16 sectors )
<b>Key Type</b>	1 Byte – Key Type to e stored I the specified sector <b>0xAA</b> – Key is stored as TypeA <b>0xBB</b> – Key is stored as TypeB
<b>Key</b>	6 Bytes – Six byte Key ( MSB first )

Table 29 – Write Master Key Command

### Response:

The following single byte response is received from the module:

<b>Data Length</b>	0x02
<b>Command/Response</b>	0x8C
<b>Status / Error Code</b>	1 Byte – Status / Error Code 0x4C ‘L’ – Write Master key successful 0x4E ‘N’ – Write Master key fail

Table 30 – Response to Write Master Key Command

### Example Command:

FF 00 09 8C 06 AA 01 02 03 04 05 06 5A

*Write key (01 02 03 04 05 06) as TypeA to sector 6 of the internal eeprom of the module.*

FF 00 09 8C 06 BB 01 02 03 04 05 06 6B

*Write key (01 02 03 04 05 06) as TypeB to sector 6 of the internal eeprom of the module.*

### Example Responses:

FF 00 02 8C 4C DA

*Write Key successful*

FF 00 02 8C 4E DA

*Write Key failed*

## 4.12 INCREMENT VALUE BLOCK

This command increments a value block with the specified amount. Before executing this command, the block should be authenticated. Also, the block should have permission for increment. If either of these conditions is not true, this command will fail. The 4-byte increment value should be sent LSB first. If the increment was successful, the 4-byte value after increment is sent back as response, LSB first.

### Command:

<b>Command</b>	0x8D
<b>Block Number</b>	1 Byte – Block number to be incremented
<b>Increment Value</b>	4 Bytes – Increment value. ( LSB first )

Table 31 – Increment Value Block Command

### Response:

Success:

<b>Data Length</b>	0x06
<b>Command/Response</b>	0x8D
<b>Block Number</b>	1 Byte – Block number that has been incremented
<b>Data</b>	4 Bytes – Value after the increment. ( LSB first )

Table 32 – Response to Increment Value Block Command

Fail:

<b>Data Length</b>	0x01
<b>Command/Response</b>	0x8D
<b>Error Code</b>	1 Byte – Error Code 0x4E ‘N’ – No Tag present 0x46 ‘F’ – Read Failed during verification

Table 33 – Response to Increment Value Block Command

### Example Command:

FF 00 06 8D 08 E8 03 00 00 86

*Increment Value Block 8 by 1000 (0x000003E8)*

### Example Responses:

FF 00 06 8D 08 F8 2A 00 00 BD

*Increment value block successful. New Value is 11000 (0x00002AF8)*

FF 00 02 8D 46 D5

*Increment failure*

## 4.13 DECREMENT VALUE BLOCK

This command decrements a value block with the specified amount. Before executing this command, the block should be authenticated. Also, the block should have permission for decrement. If either of these conditions is not true, this command will fail. The 4-byte increment value should be sent LSB first. If the decrement was successful, the 4-byte value after decrement is sent back as response, LSB first.

### Command:

<b>Command</b>	0x8E
<b>Block Number</b>	1 Byte – Block number to be decremented
<b>Decrement Value</b>	4 Bytes – Decrement value. ( LSB first )

**Table 34** – Decrement Value Block Command

### Response:

Success:

<b>Data Length</b>	0x06
<b>Command/Response</b>	0x8E
<b>Block Number</b>	1 Byte – Block number that has been decremented
<b>Data</b>	4 Bytes – Value after the decrement. ( LSB first )

**Table 35** – Response to Decrement Value Block Command

Fail:

<b>Data Length</b>	0x01
<b>Command/Response</b>	0x8E
<b>Error Code</b>	1 Byte – Error Code 0x4E ‘N’ – No Tag present 0x46 ‘F’ – Read Failed during verification

**Table 36** – Response to Decrement Value Block Command

### Example Command:

FF 00 06 8E 08 E8 03 00 00 87

*Decrement Value Block 8 by 1000 (0x000003E8)*

### Example Responses:

FF 00 06 8E 08 28 23 00 00 E7

*Decrement value block successful. New Value is 9000 (0x00002328)*

FF 00 02 8E 46 47

*Decrement failure*

## 4.14 SET ANTENNA POWER

This command turns ON or OFF the RF field. RF field can be switched off when it is not required. This helps to reduce the active current consumption. The RF field can be switched ON whenever a read or write operation is required.

### Command:

<b>Command</b>	0x90
<b>RF SWITCH</b>	1 Byte – Byte to instruct the reader whether to switch ON or OFF the RF field <b>0x00</b> – Switch Off RF Field <b>Non-Zero</b> – Switch On RF Field

Table 37 – Set Antenna Power Command

### Response:

<b>Data Length</b>	0x02
<b>Command/Response</b>	0x90
<b>Status</b>	1 Byte – RF field status after execution of the command 0x00 RF Field switched Off 0x01 RF Field switched On

Table 38 – Response to Set Antenna Power Command

### Example Command:

FF 00 02 90 00 92

*Switch Off RF field*

FF 00 02 90 01 93

*Switch On RF field*

### Example Responses:

FF 00 02 90 00 92

*RF field Switched Off*

FF 00 02 90 01 93

*RF field Switched On*

## 4.15 READ INPUT PORT

This command can not be used with SM132-USB Modules because there is no input pin connection in hardware.

### Command:

<b>Command</b>	0x91
----------------	------

Table 39 – Read Input Port Command

### Response:

<b>Data Length</b>	0x02															
<b>Command/Response</b>	0x91															
<b>Status</b>	<p>1 Byte – Status of input pins</p> <p><b>Bit0</b> – Status of INPUT1. 1 – On, 0 – Off  <b>Bit1</b> – Status of INPUT2. 1 – On, 0 – Off</p> <table> <thead> <tr> <th>Bit1</th> <th>Bit0</th> <th></th> </tr> </thead> <tbody> <tr> <td>0</td> <td>0</td> <td>INPUT2 LOW, INPUT1 LOW</td> </tr> <tr> <td>0</td> <td>1</td> <td>INPUT2 LOW, INPUT1 HIGH</td> </tr> <tr> <td>1</td> <td>0</td> <td>INPUT2 HIGH, INPUT1 LOW</td> </tr> <tr> <td>1</td> <td>1</td> <td>INPUT2 HIGH, INPUT1 HIGH</td> </tr> </tbody> </table>	Bit1	Bit0		0	0	INPUT2 LOW, INPUT1 LOW	0	1	INPUT2 LOW, INPUT1 HIGH	1	0	INPUT2 HIGH, INPUT1 LOW	1	1	INPUT2 HIGH, INPUT1 HIGH
Bit1	Bit0															
0	0	INPUT2 LOW, INPUT1 LOW														
0	1	INPUT2 LOW, INPUT1 HIGH														
1	0	INPUT2 HIGH, INPUT1 LOW														
1	1	INPUT2 HIGH, INPUT1 HIGH														

Table 40 – Response to Read Input Port

### Example Command:

FF 00 01 91 92

*Read Input pins*

### Example Responses:

FF 00 02 91 00 93

*INPUT2 LOW, INPUT1 LOW*

FF 00 02 91 01 94

*INPUT2 LOW, INPUT1 HIGH*

FF 00 02 91 02 95

*INPUT2 HIGH, INPUT1 LOW*

FF 00 02 91 03 96

*INPUT2 HIGH, INPUT1 HIGH*

## 4.16 WRITE TO OUTPUT PORT

This command can not be used with SM132-USB Modules because there is no output pin connection in hardware.

### Command:

<b>Command</b>	0x92															
<b>Status</b>	<p>1 Byte – Byte that indicates how the outputs have to be set</p> <p><b>Bit0</b> – OUTPUT1. 1 – On, 0 – Off  <b>Bit1</b> – OUTPUT2. 1 – On, 0 – Off</p> <table> <thead> <tr> <th>Bit1</th> <th>Bit0</th> <th></th> </tr> </thead> <tbody> <tr> <td>0</td> <td>0</td> <td>OUTPUT2 LOW, OUTPUT1 LOW</td> </tr> <tr> <td>0</td> <td>1</td> <td>OUTPUT2 LOW, OUTPUT1 HIGH</td> </tr> <tr> <td>1</td> <td>0</td> <td>OUTPUT2 HIGH, OUTPUT1 LOW</td> </tr> <tr> <td>1</td> <td>1</td> <td>OUTPUT2 HIGH, OUTPUT1 HIGH</td> </tr> </tbody> </table>	Bit1	Bit0		0	0	OUTPUT2 LOW, OUTPUT1 LOW	0	1	OUTPUT2 LOW, OUTPUT1 HIGH	1	0	OUTPUT2 HIGH, OUTPUT1 LOW	1	1	OUTPUT2 HIGH, OUTPUT1 HIGH
Bit1	Bit0															
0	0	OUTPUT2 LOW, OUTPUT1 LOW														
0	1	OUTPUT2 LOW, OUTPUT1 HIGH														
1	0	OUTPUT2 HIGH, OUTPUT1 LOW														
1	1	OUTPUT2 HIGH, OUTPUT1 HIGH														

Table 41 – Write to Output Port Command

### Response:

<b>Data Length</b>	0x02
<b>Command/Response</b>	0x92
<b>Status</b>	<p>1 Byte – Status of output pins after the command execution</p> <p><b>Bit0</b> – Status of OUTPUT1. 1 – On, 0 – Off  <b>Bit1</b> – Status of OUTPUT2. 1 – On, 0 – Off</p>

Table 42 – Response to Write to Output Port Command

### Example Command:

FF 00 02 92 00 94

*Switch Off both outputs*

FF 00 02 92 01 95

*Switch On Output1*

FF 00 02 92 03 97

*Switch On both outputs*

### Example Responses:

FF 00 02 92 00 94

*Both outputs switched Off*

FF 00 02 92 01 95

*OUTPUT1 switched On*

FF 00 02 92 03 97

*Both outputs switched On*

## 4.17 HALT TAG

This command executes a Mifare Halt command on the selected tag.

### Command:

<b>Command</b>	0x93
<b>Data</b>	None

Table 43 – Select Command

### Response:

<b>Data Length</b>	0x02	
<b>Command/Response</b>	0x93	
<b>Error Code</b>	0x4C	'L' – PICC(tag) is halted
	0x55	'U' – PICC can not be halted due to RF Field is OFF

Table 44 – Response to Select Command

### Example Command:

FF 00 01 93 94

*Halt Tag*

### Example Response:

FF 00 02 93 55 EA

*PICC halted*



## 4.18 SET BAUD RATE

This command sets the UART baud rate of the module. Once it is set module will be able to communicate with new baud rate even after POR. SM132-USB module operates at a default baud rate of 19200bps when shipped from the factory. As soon as this command is received, the module stores the new baud rate in its internal EEPROM and after a delay of 500ms transmit the response using the new baud rate.

### Command:

<b>Command</b>	0x94
<b>Baud Rate</b>	1 Byte – Determines the new baud rate  0x00 – 9600bps 0x01 – 19200bps 0x02 – 38400bps 0x03 – 57600bps 0x04 – 115200bps

Table 45 – Set Baud Rate Command

### Response:

<b>Data Length</b>	0x02
<b>Command/Response</b>	0x94
<b>Status/Error Code</b>	1 Byte – Status / Error Code  0x4C ‘L’ – Change of Baud rate successful 0x4E ‘N’ – Change of Baud rate failed

Table 46 – Response to Set Baud Rate Command

### Example Command:

FF 00 02 94 02 98

*Set new baud rate to 38400bps*

FF 00 02 94 03 99

*Set new baud rate to 57600bps*

### Example Responses:

FF 00 02 94 4C E2

*Baud rate changed successfully*

FF 00 02 94 4E E4

*Baud rate change operation failed*

## 4.19 SLEEP

This command should not be used with SM132-USB modules otherwise SM132-USB module should be reset-ed by hand to operate it again.

This command puts SM132-USB in sleep mode to reduce power consumption. The module switches off the RF field and enters a low power sleep mode. Only a hardware reset can bring the module out of the sleep state.

### Command:

<b>Command</b>	0x96
<b>Data</b>	None

Table 47 – Sleep Command

### Response:

<b>Data Length</b>	0x02
<b>Command/Response</b>	0x96
<b>Error Code</b>	0x00

Table 48 – Response to Sleep Command

### Example Command:

FF 00 01 96 97

*Sleep Commnad*

### Example Responses:

FF 00 02 96 00 98

*Sleep OK*

## 5. ELECTRICAL & PERFORMANCE SPECIFICATIONS

### 5.1 DC CHARACTERISTICS

Symbol	Description	Min	Typ	Max	Units	Notes
VCC	Supply Voltage	4.75	5.00	5.5	V	
RFVCC	RF Supply Voltage	4.5	5	5.5	V	
I <sub>o</sub>	Supply Current	-	180mA	-		Continuous Read Mode
I <sub>s</sub>	Sleep Current	-	30uA	-		Sleep Mode

Table 49 – DC Characteristics

### 5.2 OPERATING TEMPERATURE

Symbol	Description	Min	Typ	Max	Units	Notes
TA	Ambient Temperature	-40	-	85	°C	
TJ	Junction Temperature	-40	-	100	°C	

Table 50 – Operating Temperature

### 5.3 ABSOLUTE MAXIMUM RATINGS

Symbol	Description	Min	Typ	Max	Units	Notes
TSTG	Storage Temperature	-55	-	100	°C	Higher storage temperatures will reduce data retention time
TA	Ambient Temperature	-40	-	85	°C	
VCC	Supply Voltage	-0.5	-	5.5	V	
IMIO	Maximum Current into any Port Pin	-25	-	50	mA	
ESD	Electro Static Discharge Voltage	2000	-	-	V	Human Body Model ESD

Table 51 – Absolute Maximum Ratings

### 5.4 PERFORMANCE SPECIFICATIONS

Parameter	Min	Typ	Max	Units	Notes
Read Distance	-	5	7	cm	
Write Distance	-	5	7	cm	

Table 52 – Performance Specifications

---

## 6. SALES AND SERVICE INFORMATION

To obtain information about SONMicro Electronics products and technical support, reference the following information.



SONMicro ELECTRONICS LTD.  
Cankaya M. Soguksu C.  
Aslihan Ishani 2/15  
Mersin, 33070  
TURKIYE

Phone: +90 324 237 21 28  
Facsimile: +90 324 237 21 86  
Email: [info@sonmicro.com](mailto:info@sonmicro.com)  
Web Site: <http://www.sonmicro.com>

Sales	<a href="http://www.sonmicro.com/sales.php">http://www.sonmicro.com/sales.php</a>
Support	<a href="http://www.sonmicro.com/ask.php">http://www.sonmicro.com/ask.php</a>
Documents & Software	<a href="http://www.sonmicro.com/1356/d1356.php">http://www.sonmicro.com/1356/d1356.php</a>
User Forums	<a href="http://www.sonmicro.com/forums/">http://www.sonmicro.com/forums/</a>